

Braselton HOMES

experience the tradition

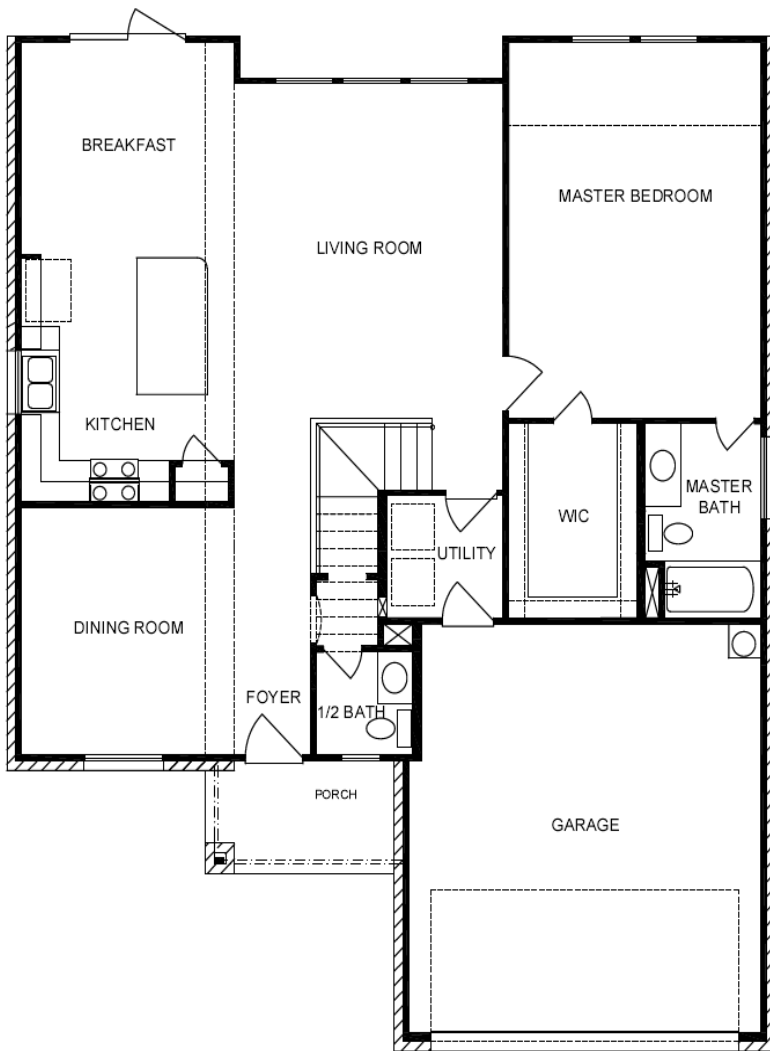
991-4710

The Parliament II

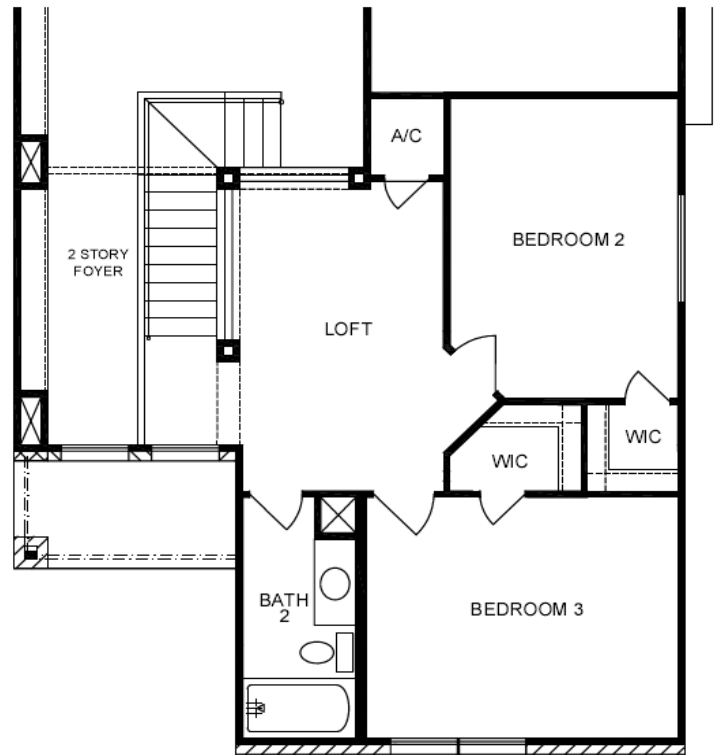
1889 Square Feet

3 Bedrooms

2.5 Baths



FIRST FLOOR



SECOND FLOOR

© Copyright – Braselton Homes, Inc. 2008



10/20/2009

"ALL SQUARE FOOTAGE ARE APPROXIMATE, PLANS MAY NOT ACCURATELY REFLECT ROOM SIZE PRICES, FINANCING, PLAN DESIGNS, AND AVAILABILITY OF SITES ARE SUBJECT TO CHANGE WITHOUT NOTICE"

The Parliament



Elevation "B"



Elevation "G"



Elevation "H"



Elevation "Y"



Elevation "Z"