

# Brasletton HOMES

*experience the tradition*

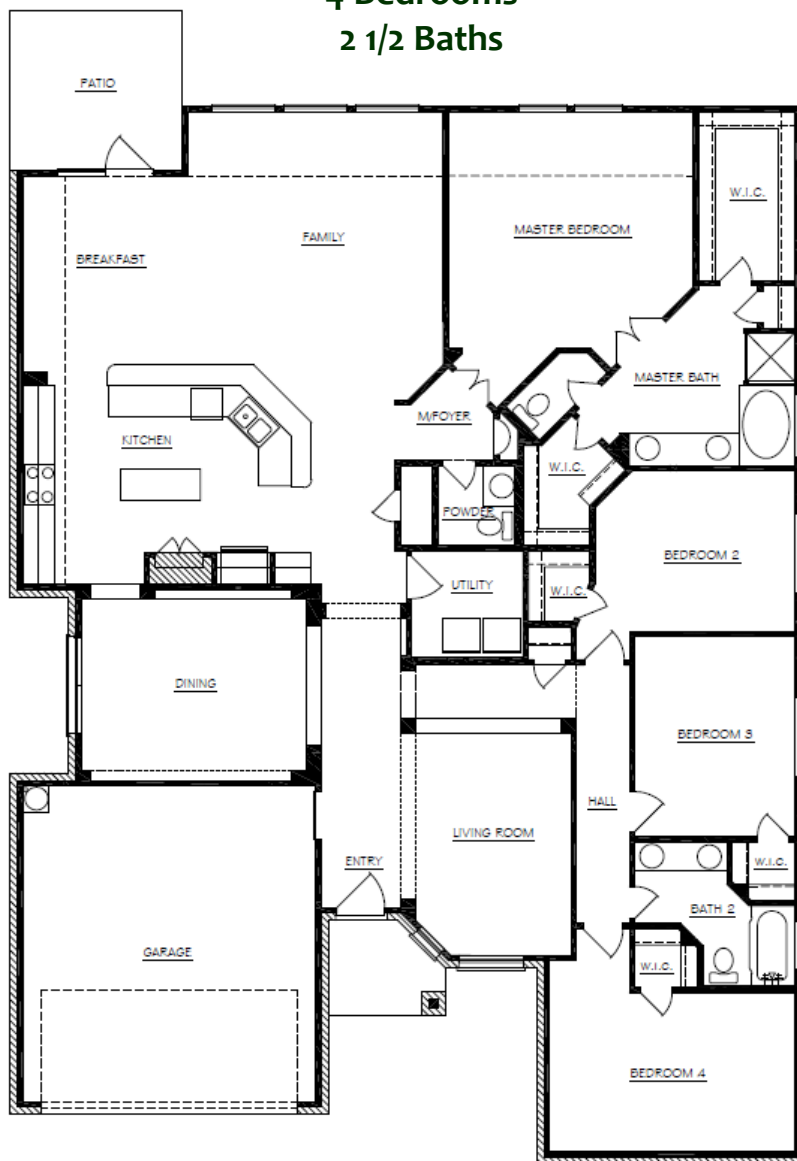
991-4710

## The Victoria II

2585 Square Feet

4 Bedrooms

2 1/2 Baths



© Copyright – Kipp Flores Architects 1999

12/02/2011

"ALL SQUARE FOOTAGE ARE APPROXIMATE, PLANS MAY NOT ACCURATELY REFLECT ROOM SIZE PRICES, FINANCING, PLAN DESIGNS, AND AVIALABILITY OF SITES ARE SUBJECT TO CHANGE WITHOUT NOTICE"

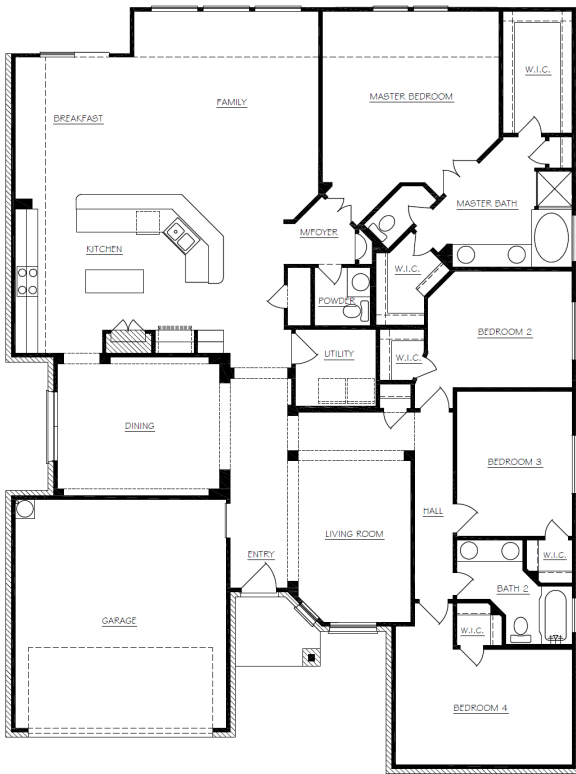
# Brasletton HOMES

*experience the tradition*

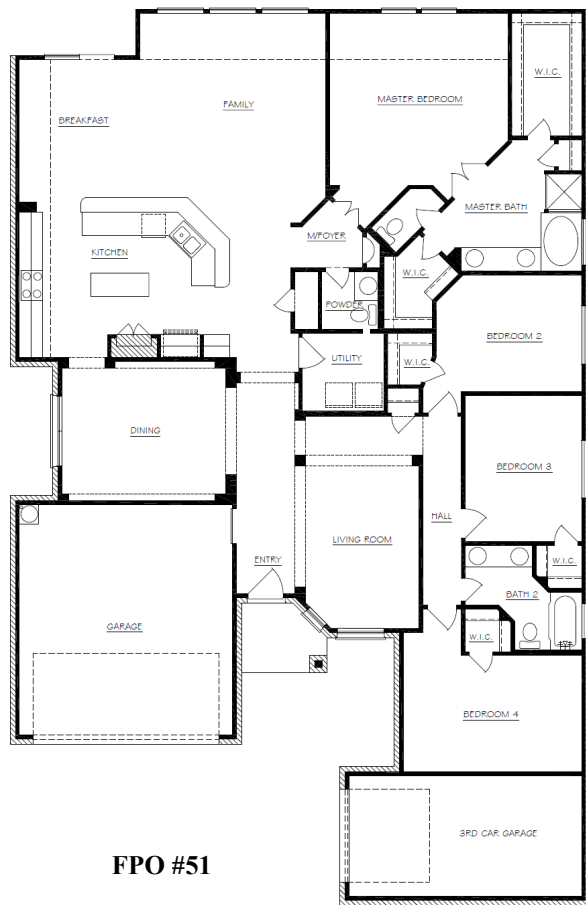
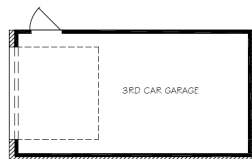
991-4710

## The Victoria II

Optional  
Bonus Rooms



FPO #47



FPO #51



08/15/11  
SUPERCIEDES  
07/25/2011

© Copyright – Kipp Flores Architects 1999

"ALL SQUARE FOOTAGE ARE APPROXIMATE, PLANS MAY NOT ACCURATELY REFLECT ROOM SIZE PRICES, FINANCING, PLAN DESIGNS, AND AVIALABILITY OF SITES ARE SUBJECT TO CHANGE WITHOUT NOTICE"

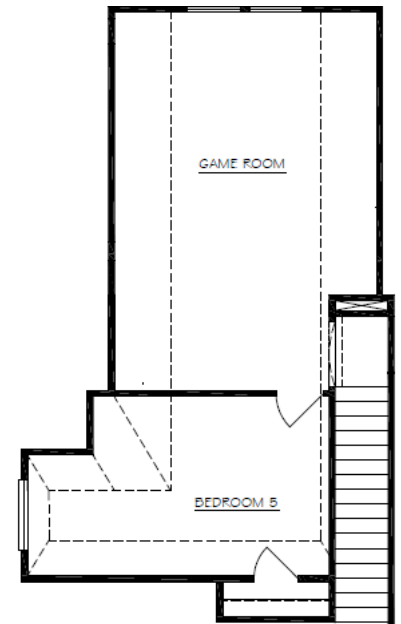
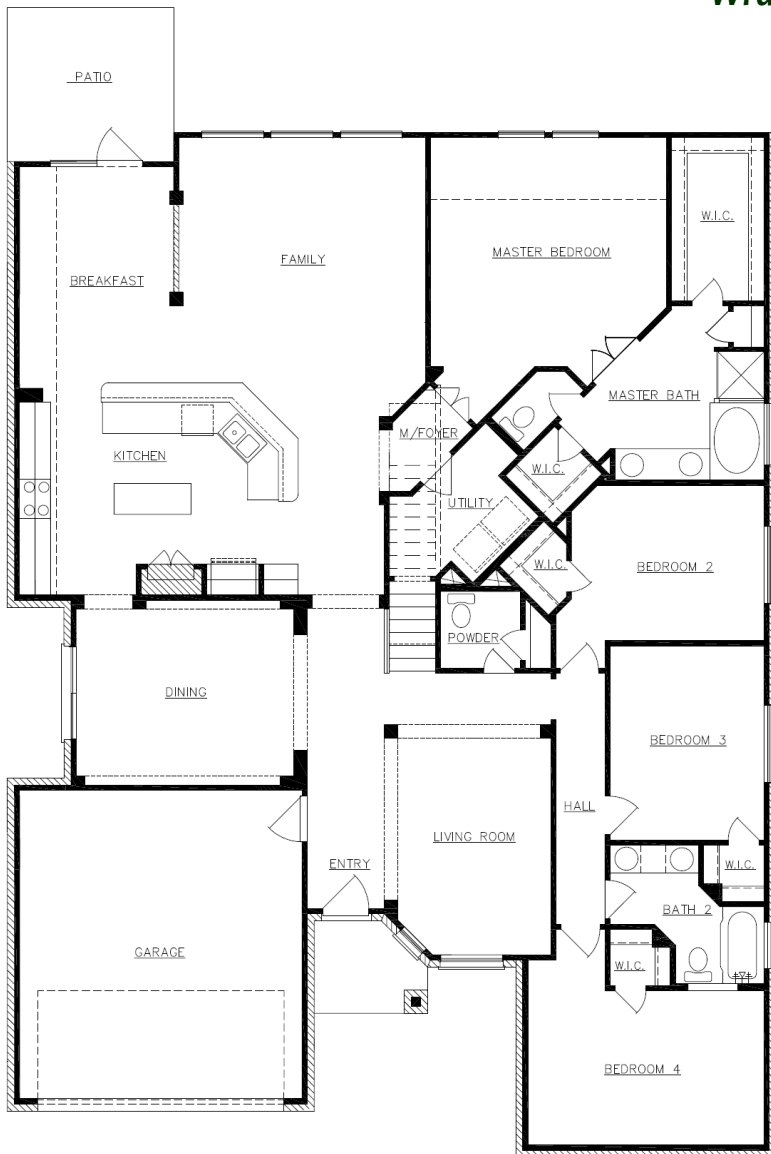
# Brasletton HOMES

*experience the tradition*

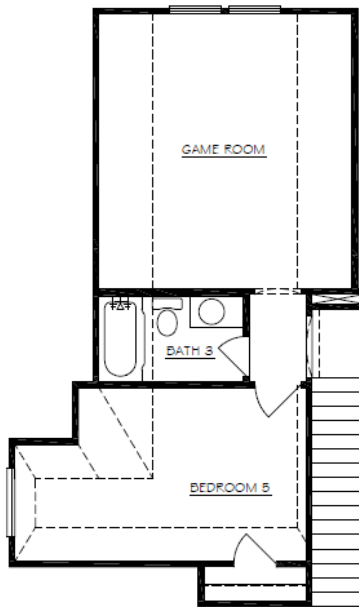
991-4710

## The Victoria II

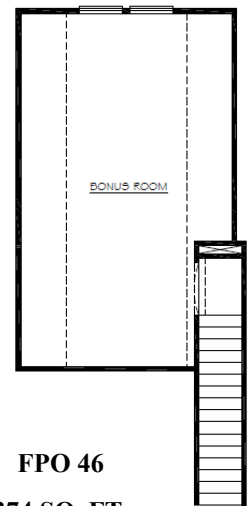
*Optional  
3rd Car Courtyard & Front  
Wrap Garage*



**FPO 48  
528 SQ. FT.**



**FPO 48 AND FPO 49  
528 SQ. FT.**



**FPO 46  
374 SQ. FT.**



© Copyright – Kipp Flo-

08/15/11  
SUPERCIEDES  
07/28/2011

"ALL SQUARE FOOTAGE ARE APPROXIMATE, PLANS MAY NOT ACCURATELY REFLECT ROOM SIZE PRICES, FINANCING, PLAN DESIGNS, AND AVAILABILITY OF SITES ARE SUBJECT TO CHANGE WITHOUT NOTICE"

# The Victoria II



Elevation "A"



Elevation "D"



Elevation "E"



Elevation "J"



Elevation "L"



Elevation "M"